

**SolarInnovate Energy Solutions**

# **Budget plan for base station communication equipment**



## Overview

---

What is link budget in LTE network planning?

**Conventional LTE Link Budget** The purpose of link budget in LTE network planning is: To estimate the maximum link loss allowed based on the maximum transmit power of the terminal and eNodeB transmit power allocation. Coverage radius of a base station can be obtained according to the maximum link loss allowance under a certain propagation model.

How many base stations are needed?

We employ a simulated annealing algorithm to determine the number of new base stations needed. After rigorous analysis, our optimal solution suggests deploying 131 micro and 19 macro base stations, with a total cost of 321. References is not available for this document.

What is a satellite link budget analysis?

A satellite link budget analysis will determine what modcod can be used and what are the required bandwidth and power. What is a good efficiency?

In general, the higher the efficiency, the better, but . Sometimes a lower efficiency is acceptable to reduce required investment or size of equipment.

What are the components of the link budget in 5G?

**Components of the Link Budget in 5G:** In 5G, various frequency bands are used, including mmWave bands. The transmitted power depends on the frequency, modulation scheme, and the specific requirements of the communication link. 5G employs Massive MIMO and beamforming.

How to calculate coverage radius of a base station?

Coverage radius of a base station can be obtained according to the maximum link loss allowance under a certain propagation model. The radius can be used in subsequent design. Link budget parameters are grouped as follows:.

Which modulation order is used in satellite communications?

Characteristics that can vary are the amplitude, frequency and phase. Typical modulations used in satellite communications are PSK and QAM. Order 4: QPSK, 4-QAM Order 8: 8-PSK, 8-QAM Order 16: 16-PSK, 16QAM – The higher the modulation order, the higher the signal to noise ratio must be for the modem to be able to demodulate it.

## Budget plan for base station communication equipment



### Coverage Area and Power Budget Calculations in GSM ...

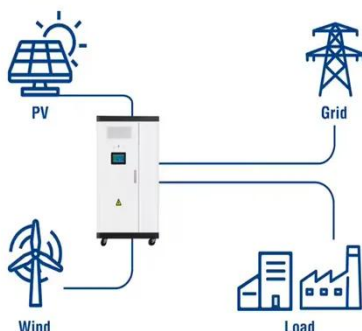
Nov 16, 2012 · The link budget looks at the elements that will determine the signal strength arriving at the receiver. it is necessary to calculate link budget in the complete design of radio ...

????\_????????????????

??  
 ???PDF  
 ???DOC ...



### Utility-Scale ESS solutions

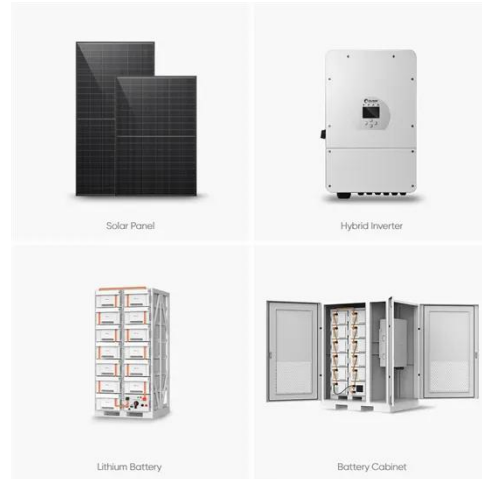


### Multi-objective cooperative optimization of communication base station

Sep 30, 2024 · Recently, 5G communication base stations have steadily evolved into a key developing load in the distribution network. During the operation process, scientific dispatching ...

## Cost Factors to Consider When Purchasing Baseband Units

Jul 18, 2025 · When diving into the world of baseband unit pricing factors, there's no shortage of questions, curiosity, and discoveries. This article aims to unpack key insights while offering ...



## Contact Us

For catalog requests, pricing, or partnerships, please visit:  
<https://institut3i.fr>