

SolarInnovate Energy Solutions

Can the 12v of the 72v inverter be used



Overview

Can a 12V 72V inverter be converted to each other?

A1: No, 12V~72V cannot be converted to each other. You can only choose one of the input voltages, and the inverter input voltage must be consistent with the system input voltage. For example: a 72V inverter can only be used for a 72V battery. Q2: How to select the output voltage:.

Do I need a 12V inverter?

To do this, you need to connect an inverter to the battery bank. It is important to match the battery bank voltage with an inverter that can handle that same voltage. Simply put, if you have a 12V system, you need a 12V inverter; a 48V system requires a 48V inverter. Standard Pure Sine Wave inverters simply change DC power to AC power.

What is a 12V solar inverter?

The inverter's job is to turn power from DC to AC. 12V solar panels are applicable for small size solar system projects for: Most RV and motorhomes already have 12V batteries for AC, refrigerator, water heater control and lighting. So it makes perfect sense to use 12V for these type of systems.

What are the two types of 12V inverters?

There are two main types of 12V inverters: sine and pure sine. Sine inverters produce a blocky signal, while pure sine inverters generate a wavy signal. Pure sine inverters are considered the best 12V inverter models because they produce a cleaner signal, which is better for expensive laptop and camera batteries.

How to test a 12 volt inverter?

Take the more expensive multimeter of the two as it can measure up to 10 Amp while the cheaper one only 2 Amp. You might later want to test a circuit with higher amperage. Never try to test your 12 V inverter with 24 V as you

have thought of doing above as you will at least blow a fuze or the complete inverter.

Do I need to select the output voltage for my inverter?

A2: The output voltage is the US standard voltage 110V~120V (default). You do not need to select the output voltage, only select the input voltage. Of course, if you need an inverter with an output voltage of 220V, please let us know by email.

Can the 12v of the 72v inverter be used

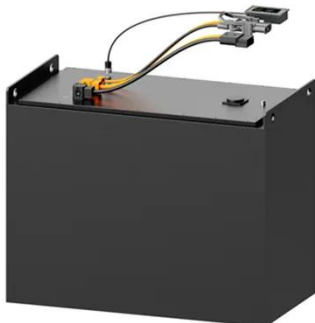


3500W 4000W 5000W Pure Sine Wave Power 12V 24V 48V 60V 72V Inverter ...

Aug 31, 2024 · About this item ?Pure sine wave inverter?: This is a real pure sine wave inverter, stable and efficient. It can convert 12V/24V/48V/60V/72VDC to 110V/220V AC. It can be used ...

12V to 72V inverter for battery charging , Electronics Forums

May 1, 2008 · Scenario 12V,20A wind generator to charge a bank of 6x 12V batteries to run a 72V motor. What would happen if you ran a 12V to 110V sine or quasi-sine inverter, through a high ...



3000w smart inverter! 12v-72v all-round conversion handy gadget, can

One machine with multiple functions: from car to home, 220v can be switched at will! As a truck driver who often travels long distances, i was really amazed by this 3000w smart inverter!?

...

Contact Us

For catalog requests, pricing, or partnerships, please visit:
<https://institut3i.fr>