

**SolarInnovate Energy Solutions**

# **China Solar Base Station Battery Operation and Maintenance**



## Overview

---

What is China's first power station utilizing lead-carbon batteries for energy storage?

A grid-side power station in Huzhou has become China's first power station utilizing lead-carbon batteries for energy storage. Starting operation in October 2020, the 12MW power station provides system stability for the Huzhou Changxing Power Grid to enhance the capacity of frequency and voltage regulation.

What is intelligent operation and maintenance platform of energy storage power station?

The intelligent operation and maintenance platform of energy storage power station is the information monitoring platform of energy storage power station, which can monitor the running status of energy storage power station in real time. In addition, the platform features include health awareness and intelligent fault diagnosis.

What is a battery energy storage system (BESS)?

With the rapid development of renewable energy, Battery Energy Storage Systems (BESS) are widely used in power, industrial, and residential sectors. Regular maintenance is essential to ensure the safety, efficiency, and longevity of battery energy storage systems.

Why should battery energy storage systems be maintained?

Battery energy storage systems can be affected by various factors during everyday use, such as ambient temperature, load changes, and battery aging. Regular maintenance helps detect potential issues, prevents sudden system failures, and ensures long-term stable operation.

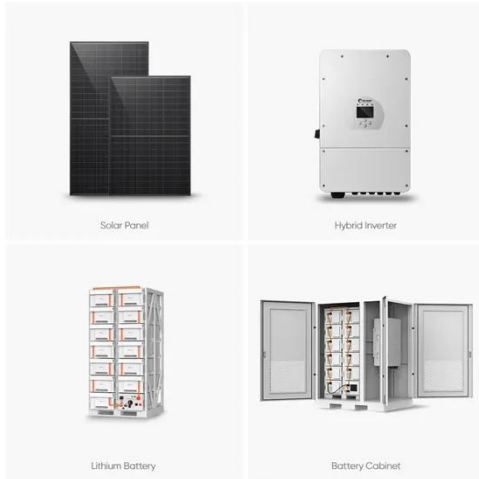
How do energy storage power stations perform state evaluation & performance evaluation?

At the terminal of the system, the state evaluation, performance evaluation and fault analysis of the batteries in the energy storage power station are carried out through horizontal and vertical data analysis. Through edge computing, system operation data and evaluate system operation status.

How often should energy storage systems be maintained?

The required maintenance frequency may vary depending on the type of energy storage system. However, the following maintenance schedule is generally recommended: Monthly Check: Basic checks such as battery status, thermal management system, and BMS operation.

## China Solar Base Station Battery Operation and Maintenance



### Aggregation and scheduling of massive 5G base station backup batteries

Feb 15, 2025 · 5G base station backup batteries (BSBs) are promising power balance and frequency support resources for future low-inertia power systems with substantial renewable ...

### Optimum sizing and configuration of electrical system for

Jul 1, 2025 · The rising demand for cost effective, sustainable and reliable energy solutions for telecommunication base stations indicates the importance of integration and exploring the ...



### PRACTICAL OPERATION & MAINTENANCE (O& M) ...

Jul 4, 2023 · The inverter used is a TBB Apollo Maxx which is a multi-functional inverter, combining functions of inverter, solar charger and battery charger to offer uninterruptible power support in ...



## Contact Us

---

For catalog requests, pricing, or partnerships, please visit:  
<https://institut3i.fr>