

SolarInnovate Energy Solutions

Circuit breaker in substation in Canberra



Overview

What type of Breaker is used in a power substation?

Air circuit breakers are also known to be very reliable - they typically provide over 20 years of service life before needing to be replaced. The oil circuit breaker is another type of breaker that can be found in power substations.

How many circuit breakers are installed in a zone substation?

The strategy covers 1168 circuit breakers and step switches installed in zone substations. Approximately 25% of the circuit breakers are older bulk oil circuit breakers (12%) and minimum oil circuit breakers (13%). The remaining 75% of the CB population consists of vacuum (62%) and SF6 (13%) circuit breakers.

How does a substation circuit breaker work?

Substation circuit breakers detect abnormal current flow, then signal an automatic mechanism to open the circuit and stop electricity flow. This rapid response protects transformers, substations, and downstream equipment from power surges and electrical faults. The exact mechanism of their operation varies by breaker type.

How long does a substation circuit breaker last?

A substation circuit breaker has three critical life stages: initial installation, maintenance and testing, and end-of-life. Following proper procedures at all of these stages will extend the life and enhance the efficacy of your circuit breakers.

Do substation circuit breakers comply with ANSI standards?

Substation circuit breakers must comply with national and international reliability and safety standards, such as those set out by the American National Standards Institute (ANSI) or the International Electrotechnical Commission (IEC).

What conditions affect a substation circuit breaker?

Substation circuit breakers are often exposed to harsh conditions, including extreme weather, dust, moisture, and temperature fluctuations. Their design must accommodate these conditions in order to maintain function and reliability.

Circuit breaker in substation in Canberra

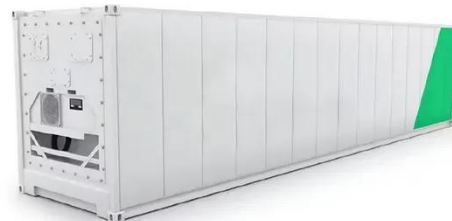


Unveiling the role of circuit breakers in substations: ensuring ...

Jul 24, 2024 · Ensuring the safety and reliability of these substations is paramount, and circuit breakers play a critical role in safeguarding these facilities. In the event of a fault within a ...

Unveiling the role of circuit breakers in substations: ensuring ...

Mar 22, 2024 · Ensuring the safety and reliability of these substations is paramount, and circuit breakers play a critical role in safeguarding these facilities. In the event of a fault within a ...



Substations - Volume V - Circuit Interrupting Devices

Dec 7, 2022 · The application of circuit breakers involves consideration of the intended function, expected results, benefits to the electric system, and characteristics of both the circuit ...



Different Types of High Voltage Circuit Breakers Used in ...

Jan 13, 2020 · Circuit breakers are essential for keeping a substation safe and operational, and it's important to understand the different types available. Each type has its own benefits and ...



Electrical Design and Construction Standards for ...

Oct 29, 2024 · Distribution substations are connected to the 11kV system by use of either a ring main isolator fuse switch (RMIFS), an isolator and earth switch (I & E switch), or a ring main ...



Contact Us

For catalog requests, pricing, or partnerships, please visit:

<https://institut3i.fr>