

SolarInnovate Energy Solutions

Communication base station lithium battery series connection



Overview

What makes a telecom battery pack compatible with a base station?

Compatibility and Installation Voltage Compatibility: 48V is the standard voltage for telecom base stations, so the battery pack's output voltage must align with base station equipment requirements. **Modular Design:** A modular structure simplifies installation, maintenance, and scalability.

Which battery is best for telecom base station backup power?

Among various battery technologies, Lithium Iron Phosphate (LiFePO₄) batteries stand out as the ideal choice for telecom base station backup power due to their high safety, long lifespan, and excellent thermal stability.

How do you protect a telecom base station?

Backup power systems in telecom base stations often operate for extended periods, making thermal management critical. Key suggestions include: **Cooling System:** Install fans or heat sinks inside the battery pack to ensure efficient heat dissipation.

What is a battery management system (BMS)?

Battery Management System (BMS) The Battery Management System (BMS) is the core component of a LiFePO₄ battery pack, responsible for monitoring and protecting the battery's operational status. A well-designed BMS should include: **Voltage Monitoring:** Real-time monitoring of each cell's voltage to prevent overcharging or over-discharging.

What is a lithium iron phosphate (LiFePO₄) battery?

Lithium Iron Phosphate (LiFePO₄) batteries are a type of lithium-ion battery with a lithium iron phosphate cathode and typically a graphite anode. Compared to traditional lead-acid batteries or other lithium-ion batteries (such as ternary lithium batteries), LiFePO₄ batteries offer several notable advantages:.

What makes a good battery management system?

A well-designed BMS should include: Voltage Monitoring: Real-time monitoring of each cell's voltage to prevent overcharging or over-discharging.

Temperature Management: Built-in temperature sensors to monitor the battery pack's temperature, preventing overheating or operation in extreme cold.

Communication base station lithium battery series connection

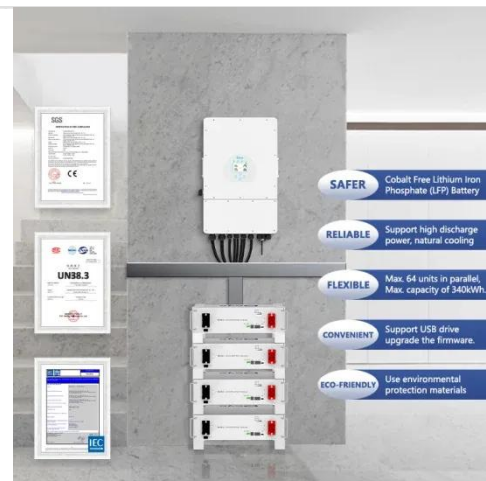


Communication base station battery / Lithium iron phosphate

Aug 7, 2025 · System Voltage: 51.2 V
 Rated Capacity: 200Ah Grid Connection:
 Off-grid / Hybrid Type: All-in-One
 (Integrated) Battery Type: LiFePO4
 (Lithium Iron Phosphate) Weight: 84 kg
 ...

Environmental feasibility of secondary use of electric vehicle lithium

May 1, 2020 · The choice of allocation methods has significant influence on the results. Repurposing spent batteries in communication base stations (CBSs) is a promising option to ...



2024-2030???????????????????? ????

2024-2030 Global and China Lithium Battery for Communication Base Stations Market Status and Forecast ????:
 qyr2404221027288 ????: ?????? ????:
 +86-176 7575 ...

?MANLY Battery?Lithium batteries for communication base stations ...

Mar 6, 2021 · In the future, especially after the 5G upgrade, lithium battery companies will no longer simply focus on communication base stations, but on how the communication network ...



Contact Us

For catalog requests, pricing, or partnerships, please visit:
<https://institut3i.fr>