

SolarInnovate Energy Solutions

Function of three-phase inverter



Overview

What is a three-phase inverter?

Three-phase inverters play a crucial role in converting direct current (DC) power into alternating current (AC) in various applications, from industrial machinery to renewable energy systems. Understanding the fundamental workings of these inverters is essential for appreciating their significance and diverse applications.

What is the difference between a 3 phase and a single phase inverter?

In a 3 phase, the power can be transmitted across the network with the help of three different currents which are out of phase with each other, whereas in single-phase inverter, the power can transmit through a single phase. For instance, if you have a three-phase connection in your home, then the inverter can be connected to one of the phases.

Which industries use three-phase inverters?

Industries such as manufacturing, data centers, and large-scale commercial operations commonly use three-phase inverters to ensure stable and efficient power management. Moreover, they play a critical role in renewable energy systems, particularly in solar power installations. Three-phase inverters are employed in various sectors, including:.

What is a 3 phase square wave inverter?

A three-phase square wave inverter is used in a UPS circuit and a low-cost solid-state frequency charger circuit. Thus, this is all about an overview of a three-phase inverter, working principle, design or circuit diagram, conduction modes, and its applications. A 3 phase inverter is used to convert a DC i/p into an AC output.

How does a DC power source work in a three-phase inverter?

The DC power source of the three-phase current-type inverter, i.e., the DC

current source, is achieved through a variable voltage source using current feedback control. However, employing only current feedback cannot reduce the power ripple in the inverter input voltage caused by switch actions, resulting in current fluctuations.

What is a multilevel three-phase inverter?

Multilevel three-phase inverters have been mainly finding applications in high-power UPS systems, motor drives, and traction systems. They are preferred to conventional two-level inverters due to their improved waveforms quality (lower THD).

Function of three-phase inverter

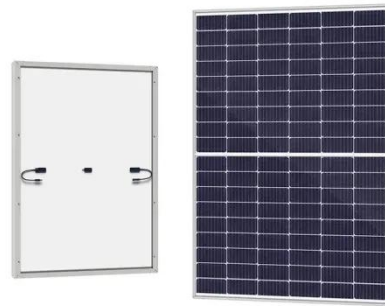


Design of Control Loop of Three-Phase Z-source Inverter

Apr 16, 2022 · Abstract. Z-source inverter(ZSI) is a new type of inverter. Its main difference from ordinary inverter is that ZSI can increase or reduce the output voltage of inverter according to ...

Three-phase inverter reference design for 200-480VAC ...

May 11, 2022 · Three-phase inverter reference design for 200-480 VAC drives with opto-emulated input gate drivers
Description This reference design realizes a reinforced isolated three-phase ...



12.8V 200Ah



The Vital Role of Three-Phase Inverters in Modern Power ...

Sep 28, 2024 · Three-phase AC is a type of power system where three AC currents with identical frequency and amplitude are separated by a 120° phase difference. By using specialized ...

Contact Us

For catalog requests, pricing, or partnerships, please visit:
<https://institut3i.fr>