

## SolarInnovate Energy Solutions

# How big an inverter should I use for an 8A battery



## Overview

---

Note! The battery size will be based on running your inverter at its full capacity  
Assumptions 1. Modified sine wave inverter efficiency: 85% 2. Pure sine wave inverter efficiency: 90% 3. Lithium Battery: 100%.

What is the calculate battery size for inverter calculator?

The Calculate Battery Size for Inverter Calculator helps you determine the optimal battery capacity needed to support your inverter system. By inputting critical parameters such as power consumption, inverter efficiency, and desired usage time, this calculator provides a precise battery size recommendation tailored to your specific needs.

What is the recommended battery size for an inverter?

Interpreting Results: Once you input the required data, the calculator will generate the recommended battery size in ampere-hours (Ah). For instance, if your power consumption is 500 watts, the usage time is 4 hours, and the inverter efficiency is 90%, the calculator might suggest a battery size of approximately 222 Ah.

What voltage should a 12V inverter run on?

The input voltage of the inverter should match the battery voltage. (For example 12v battery for 12v inverter, 24v battery for 24v inverter and 48v battery for 48v inverter Summary What Will An Inverter Run & For How Long?

.

How much battery do I need to run a 3000-watt inverter?

You would need around 24v 150Ah Lithium or 24v 300Ah Lead-acid Battery to run a 3000-watt inverter for 1 hour at its full capacity Here's a battery size chart for any size inverter with 1 hour of load runtime Note! The input voltage of the inverter should match the battery voltage.

What size inverter for a 200Ah battery?

To determine the appropriate inverter size for a 200Ah battery, consider the following: A 500VA inverter would be suitable, offering a balance between performance and battery life. For extended run times, consider larger inverters or additional batteries to meet higher power demands.

Does a 24V inverter need a 12V battery?

An inverter's battery capacity must match its voltage rating. If an inverter operates at 24V, the battery bank should be designed accordingly. For instance, using two 12V batteries in series provides 24V, while a 48V system requires four 12V batteries. Ensuring proper voltage alignment prevents system overloads and ensures stable performance.

## How big an inverter should I use for an 8A battery

---

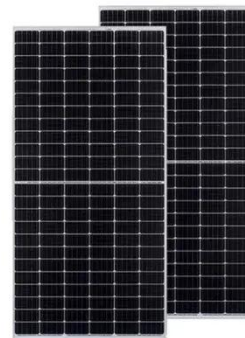


### How to Choose the Right Inverter for Lithium Batteries?

Apr 11, 2025 · Answer: To choose the right inverter for lithium batteries, match the inverter's voltage and capacity to your battery's specifications, prioritize pure sine wave inverters for ...

### Understanding Battery Capacity and Inverter Compatibility

Aug 20, 2024 · To estimate how long a battery can run an inverter, we need to consider the power draw and the battery's capacity. Using a 100 Ah battery with a 1000W inverter, we perform the ...



51.2V 150AH, 7.68KWH

### Inverter Sizing: Can Your Inverter Be Too Big For Your Battery ...

Apr 14, 2025 · An inverter can indeed be too big for your battery bank. An oversized inverter might waste energy and raise operating costs. To prevent this, ensure the inverter size matches your ...

## What Size Inverter Can I Run Off a 100Ah Battery? A ...

Aug 13, 2024 · A 500W inverter comfortably handles these appliances, allowing for efficient use of the 100Ah battery. However, always verify the power ratings of your specific devices. Medium ...



## How Big Of an Inverter Can My Car Handle , Expert Guide

Mar 22, 2023 · If you're thinking about upgrading your car's inverter, then you are right place. This expert guide will discuss How Big Of an Inverter Can My Car Handle. Most cars can handle an ...

## Contact Us

For catalog requests, pricing, or partnerships, please visit:  
<https://institut3i.fr>