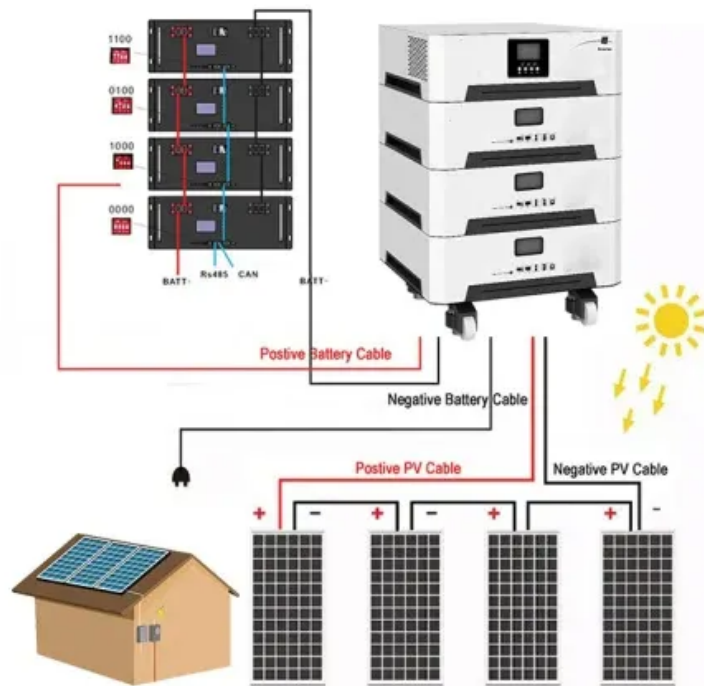


SolarInnovate Energy Solutions

How many square meters are needed for 500 kilowatts of solar energy



Overview

A 500kW solar system requires an area of approximately 347.22 square meters to meet its power generation needs. How many square meters is a kilowatt solar panel system?

The area required for each kilowatt (kW) solar panel system is approximately 5 to 10 square meters, depending on the panel efficiency and wattage. 1. The effici.

How much space does a kilowatt solar panel system need?

The area required for each kilowatt (kW) solar panel system is approximately 5 to 10 square meters, depending on the panel efficiency and wattage. 1. The efficiency of the solar panels influences the space needed significantly, with higher efficiency panels requiring less area per unit of power generated. 2.

How to calculate solar power per square meter?

You can calculate the solar power per square meter with the following calculators. 1. For Off-Grid It is the system that generates its own power with panels and a battery bank. In the off-grid calculator select from the option, shed cabin, house, or portable. Next, select the days of full autonomy, etc. 2. Solar Savings Calculator.

How many solar panels are needed for a 300W solar panel?

For calculations, if one assumes an average solar panel size of 1.6 square meters for a 300W panel, the calculations will reveal that around 3.3 panels would be necessary to generate 1 kW of energy. This translates into approximately 5.28 square meters needed for these installations.

How much solar energy is received per square meter?

The amount of solar intensity received by the solar panels is measured in terms of square per meter. The sunlight received per square meter is termed solar irradiance. As per the recent measurements done by NASA, the average

intensity of solar energy that reaches the top atmosphere is about 1,360 watts per square meter.

How do you calculate a 5 kW solar system?

Step 1: Calculate number of panels Step 2: Calculate footprint considering tilt

Step 3: Calculate total area Interpretation: About 35 m² of rooftop space is needed to install a 5 kW system with these panels and layout conditions.

Example 2: Ground-Mounted Commercial Solar Farm (500 kW System) Step 1: Calculate number of panels

How many square meters are needed for 500 kilowatts of solar energy



Solar Panel Watts Per Square Foot: 'We (Finally) Did The Math'

2 days ago · Alright, a lot has been said about solar panel watts per square foot. Everybody agrees this is a very important specification. There is a lot of disagreement on how many watts ...

Total Area Required for Solar Panel Installation Calculator

Apr 20, 2025 · Interpretation: About 35 m² of rooftop space is needed to install a 5 kW system with these panels and layout conditions. Example 2: Ground-Mounted Commercial Solar Farm (500 ...



Contact Us

For catalog requests, pricing, or partnerships, please visit:
<https://institut3i.fr>