

SolarInnovate Energy Solutions

How many watts does a solar bulb have



Overview

How many light bulbs can a solar panel power?

To estimate the number of light bulbs a solar panel can power, you can use the following general calculation: $\text{Number of light bulbs} = \text{Solar panel capacity (in watts)} / \text{Light bulb wattage (in watts)}$ For example, If you have a 250-watt solar panel and are using 10-watt LED light bulbs: $\text{Number of light bulbs} = 250 \text{ watts} / 10 \text{ watts} = 25 \text{ light bulbs}$.

How many light bulbs are in a 250 watt solar panel?

For example, If you have a 250-watt solar panel and are using 10-watt LED light bulbs: $\text{Number of light bulbs} = 250 \text{ watts} / 10 \text{ watts} = 25 \text{ light bulbs}$. Please note that this is a simplified estimate and doesn't account for factors like battery storage, energy losses, and variations in sunlight.

How many Watts Does a light bulb use?

Light Bulb Wattage: Determine the wattage of the light bulbs you intend to power. Compact fluorescent lamps (CFLs) typically range from 7 to 30 watts, while incandescent bulbs can range from 40 to 100 watts or more. LED bulbs are the most energy-efficient and usually consume 4 to 15 watts.

How many Watts Does a solar light need?

Working with the solar lighting specialist can help determine the requirements needed for light output. For example, signs can be illuminated with a range from a 3.4 Watt FLAB mini flood for small signs to up to 25 Watt ARF flood fixtures for large signs and billboard applications. The same thing can be said for overhead lights.

How much power does a 100 watt light bulb use?

A standard 100-watt light bulb uses 0.1 kilowatts (kW) of power. So, if you have ten 100-watt light bulbs, they will use 1 kW of power combined. If you want to know how many hours a day your lights will be on, divide the number

of watts by 1000 to find out how many kWh per day your lights will use.

How much electricity does a 100 watt solar panel use?

A typical 60-watt incandescent light bulb uses about 0.06 kilowatts (kW) of electricity per hour. This means that a 100-watt solar panel could theoretically power than a 40 watt solar panel. However, incandescent bulbs are being phased out in favor of more efficient options like LED lights that stay on all night.

How many watts does a solar bulb have

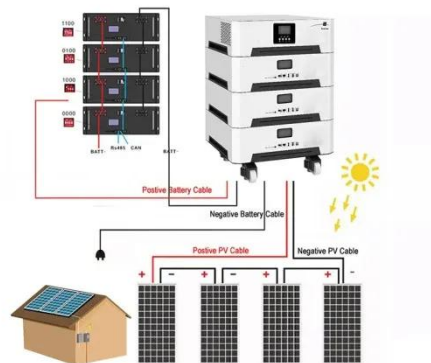


The Power of Solar Light Bulbs: How Many Watts Does One Have...

Nov 29, 2023 · The wattage of solar light bulbs can vary depending on their design, purpose, and intended use. Generally, solar light bulbs have a wattage ranging from 0.5 to 5 watts. The ...

How many watts does a solar light bulb have? , NenPower

Jun 15, 2024 · The wattage of a solar light bulb can vary significantly, but typically, they range from 1 to 20 watts, with most efficient options around 5 to 10 watts. Solar light bulbs are ...



Contact Us

For catalog requests, pricing, or partnerships, please visit:
<https://institut3i.fr>