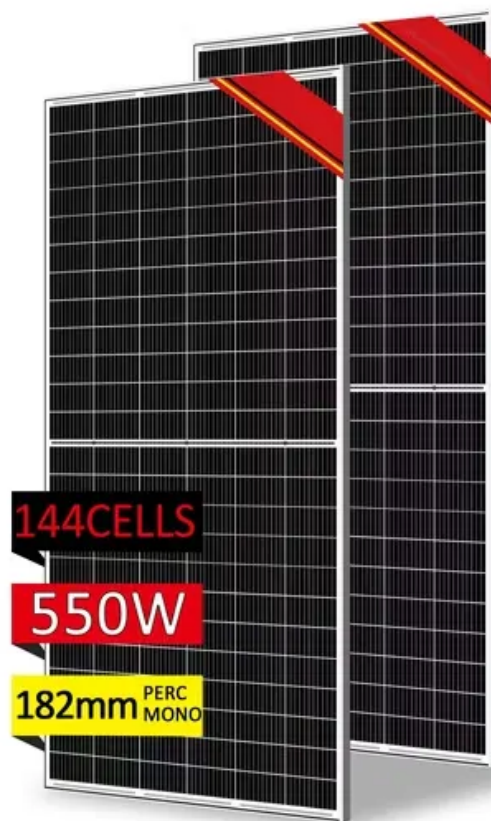


SolarInnovate Energy Solutions

How many watts is equivalent to one thousand watts of solar energy



Overview

A kilowatt (KW) is equal to 1,000 watts, and a megawatt (MW) is equal to 1,000,000 watts. Determining a solar panel system's capacity requires the use of specific units of measurement. What is a Watt in solar power?

A watt is defined as one joule of energy transferred per second. This small unit becomes more practical for quantifying the power output of solar panels when expressed in larger multiples, such as kilowatts and megawatts. The watt is the fundamental unit of power used to measure the output of small-scale solar panels and electronic devices.

How many kilowatts does a solar system produce?

For instance, a typical residential solar installation might have a total power output of 5 kilowatts (5 kW). This could be achieved with around 16 to 20 solar panels, each rated at 300 watts. The megawatt is an even larger unit of power, equal to one million watts or one thousand kilowatts.

How many watts in 1 kilowatt?

One kilowatt (kW) equals 1,000 watts. One megawatt (MW) equals 1,000 kilowatts. NOTE: 1,000 kW equals 1,000,000 watts. To convert kilowatts to megawatts: Divide the number of kilowatts by 1,000 For example: $8 \text{ kW} \div 1,000 = 1 \text{ watt}$ For easy reference, you can just use this conversion chart to convert megawatts to kilowatts at a glance.

How many Watts Does a solar panel produce?

A solar panel's output wattage is how much electricity it can produce. Typical modern solar panels are rated for power output of around 350 to 400 watts. But, how many megawatts does a house use?

A home uses multiple solar panels. Combined, your panels will produce thousands of watts of electricity.

What is solar wattage?

Wattage refers to the amount of electrical power a solar panel can produce under standard test conditions (STC), which simulate a bright sunny day with optimal solar irradiance (1,000 W/m²), a cell temperature of 25°C, and clean panels. In simpler terms, a panel's wattage rating tells you its maximum power output under ideal conditions.

How do I calculate solar wattage?

Solar Panel Watts Calculator: To calculate how much solar wattage you need, follow this simple formula: Use the formula: Total Wattage Needed = (Daily kWh Usage ÷ Sun Hours) × 1,000 (30 ÷ 5) × 1000 = 6,000 watts or 6 kW system Add a 10-20% buffer to account for system losses. Solar Panel Tester Multimeter buy from Amazon!

How many watts is equivalent to one thousand watts of solar energy



What is a Watt, Anyway? Understanding Energy and Power ...

Apr 20, 2011 · How many mystery writers does it take to change a 60-watt lightbulb? Two--one to screw the bulb almost all the way in, and one to provide a surprising twist at the end. How ...

Watts, Kilowatts, and Megawatts, And How To Convert ...

Feb 28, 2023 · State-of-the-Art Solar Panels from Solarise Solar, Colorado Your Solarise Solar expert will calculate how many kilowatts of electricity are used in your home and the number of ...



Contact Us

For catalog requests, pricing, or partnerships, please visit:
<https://institut3i.fr>