

SolarInnovate Energy Solutions

How to connect the UPS integrated cabinet to the battery cabinet



Overview

How do I connect a battery cabinet to a ups?

1.7 For More Information, for UPS cabinet terminal locations. Route the battery cabinet ground wiring from the UPS through the top of the IBC to the wiring channel on the left side of the IBC (see Figure 13). Route the wiring along the wiring channel to the IBC ground terminal block.

How do I connect a battery to a ups?

Connect and route cables from positive (+) and negative (-) terminals in the bottom of the first battery cabinet into the UPS cabinet. Connect the (+) lead to terminal E4 (+) and the (-) to terminal E5 (-) in the UPS cabinet.

How to install ups?

and unpacking Use the following basic sequence of steps to install the UPS: Create an installation plan for the battery cabinet (Chapter 3). Prepare your site for the battery cabinet (Chapter 3). Inspect and unpack the battery cabinet (Chapter 3). Unload and install the battery cabinet, and wire.

How do I connect an IBC to a ups cabinet?

IBCs can be installed in a line-up-and-match configuration with the interface wiring routed through the IBCs and UPS cabinet or in a standalone configuration with the interface wiring routed between the IBCs and the UPS cabinet using conduit. Disconnect terminal block plug from terminal block to wire plug.

How do you wire a battery cabinet?

Route the battery cabinet ground wiring from the UPS through the top of the IBC to the wiring channel on the left side of the IBC (see Figure 13). Route the wiring along the wiring channel to the IBC ground terminal block. See Figure 14 for terminal location. Secure the ground wiring to the wire tie anchors (see Figure 15) using Zip ties.

Where do I install a line-up and match Battery Cabinet?

Line-up-and-match battery cabinets are installed adjacent to the UPS. The recommended installation location is on the right side of the UPS cabinet as viewed from the front of the cabinet. See Figure 2 for line-up-and-match configuration view. Figure 2. Eaton 93PM 50 kW or 100 kW UPS and Two 93PM Integrated Battery Cabinets

How to connect the UPS integrated cabinet to the battery cabinet



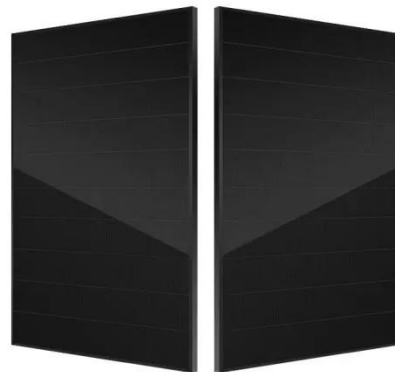
Need some tips on replacing a UPS onto a server rack!

Aug 10, 2015 · Hi all, Our company recently had to replace a defective APC unit (with a battery pack) and since it's my first time replacing a huge UPS unit like this, I would like to ask few tips ...

Powerware 9395 Integrated Battery Cabinet (Model IBC ...

Jun 17, 2016 · 1 Introduction During brownouts, blackouts, and other power interruptions, battery cabinets provide emergency DC power to the UPS to safeguard operation of the critical load.

...



How to design an energy storage cabinet: integration and ...

Jan 3, 2025 · This article will introduce in detail how to design an energy storage cabinet device, and focus on how to integrate key components such as PCS (power conversion system), EMS ...

Connect Cables between the Easy UPS 3S and the Modular Battery Cabinet

Remove the conduit box from the rear side of the modular battery cabinet.
Rotate the conduit box and install.
Remove the right or left side panel. If more than one modular battery cabinet is part ...



Deye Official Store

10 years
warranty

Contact Us

For catalog requests, pricing, or partnerships, please visit:
<https://institut3i.fr>