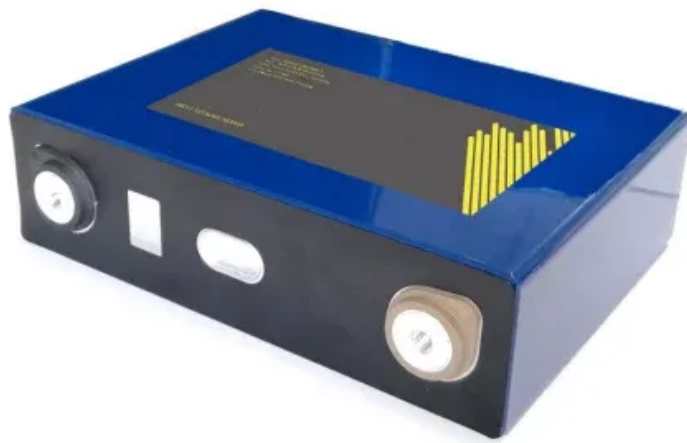


SolarInnovate Energy Solutions

Outdoor base station distribution requirements



Overview

What is Multitech outdoor base station bs422?

MultiTech Outdoor Base Station BS422Unlock a new level of connectivity, efficiency, and cost savings. This compact, rugged, and versatile outdoor base station offers uninterrupted connectivity in challenging conditions, with multi-technology, multi-frequency, and multi-

What is Damm Multitech outdoor base station bs422?

.dammcellular.comKey specificationsThe DAMM MultiTech Outdoor Base Station BS422 is the first product in DAMM's MultiTech System. It features multi-technology, multi-carriers, multi-frequency and frequency sharing and is core-connected, eliminating the need for external GNSS receiver availableAntenna setup: Minimum one antenna.

Are more BSS required in areas with densely distributed buildings?

Another interesting result is that as p increases, more BSs are deployed in the southern and northwestern parts of the study area where buildings are densely distributed. In other words, more BSs are required in areas with densely distributed buildings to improve service coverage.

What is the zxg10-bss base station subsystem?

The ZXG10-BSS Base Station Subsystem provides and manages radio transmission in GSM, and it is composed of the ZXG10-BSC Base Station Controller and the ZXG10-BTS Base Transceiver Station. ZXG10 OB06 is one of the ZXG10-BTS series of base transceiver stations, and is an integrated outdoor BTS for GSM.

How far can a 850 MHz antenna be installed from the outside?

The installation of an OUTDOOR antenna must be such that, under normal conditions, all personnel cannot come within 4M (13.12 feet) for 850MHz unit and 3M (9.84 feet) for 1900MHz unit from the outside antenna.

How many cells does a base station cover?

Such a base station covers three adjacent cells, and in fact it contains at least three TRXs. Usually, a base station in this kind of network is called a site. The base site with an omni-antenna covers only one cell; while the base site with a directional antenna covers three cells.

Outdoor base station distribution requirements



Research and Implementation of 5G Base Station Location ...

Oct 29, 2023 · The application requirements of 5G have reached a new height, and the location of base stations is an important factor affecting the signal. Based on factors such as base station ...

Optimizing the ultra-dense 5G base stations in urban outdoor ...

Dec 1, 2020 · In this study, we couple geographic information system (GIS) and a heuristic algorithm to search for the optimal locations of each BS in a 5G network. The spatial modelling ...



Contact Us

For catalog requests, pricing, or partnerships, please visit:
<https://institut3i.fr>