

SolarInnovate Energy Solutions

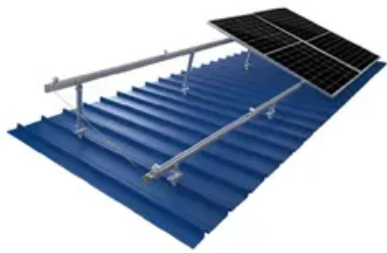
Solar photovoltaic panel 20kw



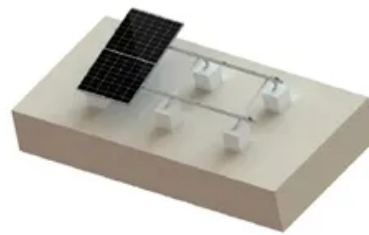
TILE ROOF SOLAR MOUNTING SYATEM



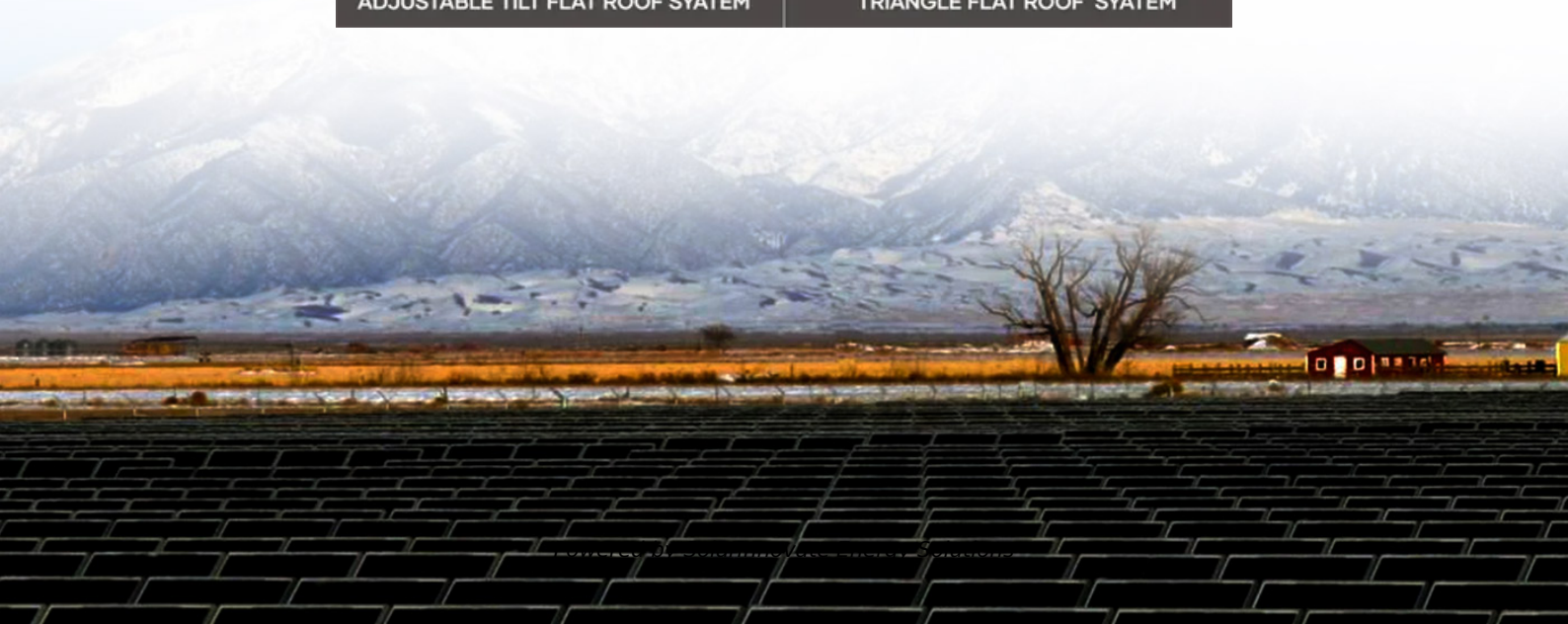
STANDING SEAM ROOF SYATEM



ADJUSTABLE TILT FLAT ROOF SYATEM



TRIANGLE FLAT ROOF SYATEM



Overview

What is a 20kW Solar System?

A 20kW solar system is a type of solar power system that typically has a capacity of 2400units per month. A solar system is usually paired with the 50-60 solar system which can be mounted on rooftops or ground mount systems. There are mainly three types of solar systems which are available in the Indian market.

What is a 20kW hybrid solar system?

Fully Customizable to Fit Your Requirements□ 20kW hybrid solar system with a 20kWh lithium battery offers a comprehensive and adaptable energy solution, catering to a wide range of residential, commercial, and remote applications.

What is a 20 watt solar panel kit?

The 20 watt solar panel kit is the basic component for 12V battery charging Off-Grid System. The solar system can be used on RV, marine, motorhome, Cars, Boats, Caravan, roofs, sheds, garages or other flat surfaces to tilt solar panels. It also widely applied in gardening, camping, green house solar systems, and off-grid power supply system.

How much does a 20 kW solar system cost?

Compare price and performance of the Top Brands to find the best 20 kW solar system with up to 30 year warranty. Buy the lowest cost 20kW solar kit priced from \$1.12 to \$2.10 per watt with the latest, most powerful solar panels, module optimizers, or micro-inverters. For home or business, save 26% with a solar tax credit.

What is a 2KW solar panel system?

A 2kW solar panel system is a 2 kilowatt solar panel that generates around 8kWh per day. It is perfect to run all the major appliances of a small house, allowing you to enjoy unlimited power in an environmentally friendly way.

How many solar panels are in a 20 KW installation?

A typical residential solar panels produces about 260 watts, so a 20 kW installation is made up of around 78 solar panels. If your solar panels are less efficient – say around 250 watts – that total goes up to 80 panels.

Solar photovoltaic panel 20kw



20kw Solar Power System Modules Energy PV Panels System

Mar 5, 2025 · The grid-tied solar system is an electricity generating solar PV power system that is connected to the utility (State) grid. It consists of solar panels, one or several on grid inverters, ...

Contact Us

For catalog requests, pricing, or partnerships, please visit:
<https://institut3i.fr>