

SolarInnovate Energy Solutions

What is the size of the photovoltaic panels on the roof of West Asia



Overview

How big is a 330W solar panel?

330W solar panel size: 1855 * 1092 * 40mm 490W solar panel size: 2187 * 1102 * 35mm Overall, a standard household solar system will occupy 100-200 square meters of roof space. The system can be installed on your roof or on a floor bracket located somewhere in your property (such as on a bungalow or a car shed).

How big are residential solar panels?

Most residential solar panels are 1.7m tall x 1.0m wide (or 1.7 m²), with a maximum power output of around 330W. Solar panels also come with 72 solar cells, which are larger to accommodate the additional cells. They are around 30% larger than residential solar panels, measuring approximately 2.1m tall x 1.1m wide (or 2.3 m²).

How much roof area does a 15kW photovoltaic power plant need?

If you want to install a 15KW photovoltaic power plant, it will require approximately 100 square meters of roof area. If we install a 15KW household photovoltaic power plant, the number of high-power solar panels and low-power solar panels used:.

Can solar panels be mounted on a roof?

Mounting solar panels on a roof surface to create a solar power system is known as rooftop solar mounting. Solar panels can't be put on a roof without first having mounting brackets installed.

How big is a 96 cell solar panel?

96-cell solar panel size. The dimensions of 96-cell solar panels are as follows: 41.5 inches long, and 63 inches wide. That's a 63x41.5 solar panel. This form is a bit shorter but wider. This is the typical classification of solar panel sizes (based on the solar cell size). It's a bit theoretical and quite useless for most

calculations.

How many solar cells are in a solar panel?

Traditional solar panels have two common configurations: 60 solar cells and 72 solar cells. The corresponding dimensions are: Photovoltaic module composed of 60 solar cells: 1.635 square meters (1.65 meters x 0.991 meters)
Photovoltaic module composed of 72 solar cells: 1.938 square meters (1.956 meters x 0.991 meters)

What is the size of the photovoltaic panels on the roof of West Asia

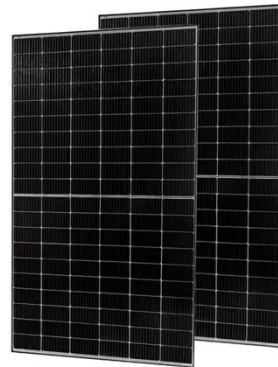


Solar panel sizes and dimensions explained , FMB

May 7, 2025 · Solar panel size matters. Not only in terms of the physical dimensions of the solar panels - your roof can only fit so many - but in the amount of power they produce. Striking the ...

Solar Panel Sizes, Dimensions & Weight , Solar Choice

Feb 7, 2024 · Most residential solar panels are 1.7m tall x 1.0m wide (or 1.7 m²), with a maximum power output of around 330W. Solar panels also come with 72 solar cells, which are larger to ...



Contact Us

For catalog requests, pricing, or partnerships, please visit:
<https://institut3i.fr>