

SolarInnovate Energy Solutions

Which inverter should I use for connecting to the grid in Juba communication base station



Overview

Can a hybrid inverter work on a grid?

Yes, for readers having doubts about can hybrid inverter work on grid, yes, a hybrid inverter can work on a grid. In fact, one of the main functions of a hybrid inverter is to be able to connect to the grid and feed excess energy generated by the solar panels back into the grid.

What does a hybrid inverter do?

In addition, a hybrid inverter can also perform other functions related to grid power, such as power backup in case of a power outage, and monitoring and controlling the energy transfer between the grid, batteries, and solar panels.

How to Connect Hybrid Inverter to Grid?

.

Can you switch a hybrid inverter to off-grid mode?

If you have a hybrid inverter with off-grid capability, you can successfully switch the system. But, the question is how?

Here's come a small twist. Before you move on, you need to disconnect the grid side when the power goes off. Then, simply put the system in off-grid mode and operate it.

Can a solar inverter work with an off-grid Solar System?

An off-grid inverter can work with an off-grid solar system as it needs enough space to store energy for at least two days. Similarly, hybrid system inverters use hybrid grid connectors. The battery needs to be large enough to supply 5 to 10 hours of energy based on the application.

What is a grid-tied solar inverter?

It is a system of Grid-tied, off-grid, and Hybrid solar inverters. A grid-tied or on-

grid solar system is directly connected to the utility power grid. Hence it's called 'grid-tied! Fortunately, this system offers a higher efficiency rate. Moreover, its lower equipment and installation charge enables optimum benefits for the users.

Can a grid-tie inverter work with an off-grid system?

You can trick a grid-tie inverter with an off-grid system. The off-grid system is a tricky method that needs a 600-volt string inverter. If you can add battery backup to an existing grid-tied, it can automatically turn on the power of the critical appliances. Can a hybrid inverter work without a grid?

Which inverter should I use for connecting to the grid in Juba comm



Connecting Inverters and Batteries for Maximum Efficiency

Jul 6, 2024 · Connecting an inverter to two parallel batteries, learning how to connect two inverter generators in parallel, and understanding the nuances of connecting two inverters in parallel ...

Grid Tie Inverter That Does Not Feed Into The Grid

Nov 18, 2023 · If you have a hybrid inverter with off-grid capability, you can successfully switch the system. But, the question is how? Here's come a small twist. Before you move on, you need to ...

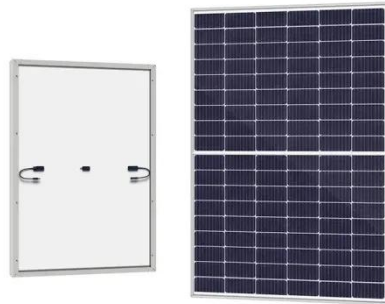


How to Connect Solar Panels to the Grid: A Step-by-Step Guide

Aug 13, 2025 · Connect the batteries to the inverter, ensuring correct polarity to avoid damage. Use a reliable battery management system to monitor charging and discharging cycles. This ...

Grid-Tie Basics: Connecting Your Solar System To The Power Grid

Apr 19, 2025 · An oversized or undersized system can lead to inefficiency or violations of utility rules.
4. Install a Grid-Tie Inverter Unlike off-grid inverters, grid-tie inverters must synchronize ...



Contact Us

For catalog requests, pricing, or partnerships, please visit:
<https://institut3i.fr>